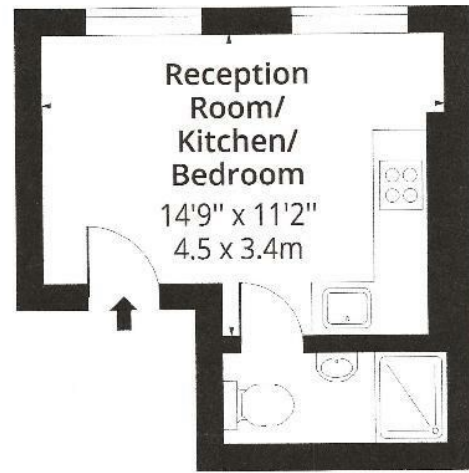


Newington Green, N16
 Approx. Gross Internal Area 184 Sq Ft - 17.09 Sq M



Second Floor

Floor Area 184 Sq Ft - 17.09 Sq M



Measured according to RICS IPMS2. Floor plan is for illustrative purposes only and is not to scale. Every attempt has been made to ensure the accuracy of the floor plan shown, however all measurements, fixtures, fittings and data shown are an approximate interpretation for illustrative purposes only. 1 sq m = 10.76 sq feet. Date: 4/11/2022
 lpaplus.com



Energy Efficiency Rating		Current	Potential
Very energy efficient - lower running costs			
(92 plus) A			
(81-91) B			
(69-80) C			
(55-68) D		67	72
(39-54) E			
(21-38) F			
(1-20) G			
Not energy efficient - higher running costs			
England & Wales		EU Directive 2002/91/EC	

Contact Us:
 02072 490272

E-mail us:
 sales@michaelnaik.com

Visit our website:
 www.michaelnaik.com

- Studio Flat
- First Floor
- Excellent Location
- 181 sq ft
- Available from June
- Unfurnished

£1,250 PER MONTH



Agents Note: Whilst every care has been taken to prepare these particulars, they are for guidance purposes only. All measurements are approximate and are for general guidance purposes only and whilst every care has been taken to ensure their accuracy, they should not be relied upon and potential buyers are advised to recheck the measurements.



About The Property...

Available 15th June, this first floor studio flat is conveniently placed in Newington Green, with local amenities and transport links both close-by , and offering a studio space with kitchenette area, laminate wood flooring, ceiling height double glazed windows and a shower room.

Key Information

Available 15th June

Unfurnished

Reservation Deposit - £288 (forms part of security deposit)

Security Deposit - £1,440

Council Tax - Islington - Band A

